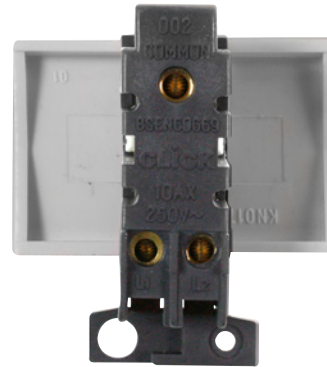


# Technical Specification

Product Code: MD009AB

Description: 10AX Ingot 2 Way Paddle Switch Module



## General Information

Dimensions	48mm (W) x 52mm (H) x 20mm (D)
Aperture Dimensions	48mm (W) x 31.5mm (H)
Finish	Antique Brass
Materials	Rocker Switch: Urea Rear Housing: Nylon Switch Cover: Stainless Steel Terminals: Brass Terminal Screws: Steel & Yellow Passivated Contacts: Silver "on-lay" Copper / Brass Internal Busbars: Formed Pressed Brass
Maximum Voltage	250V 50Hz
Load Rating	10AX (Suitable For Inductive Loads)
Terminal Size	3.5mm $\varnothing$
Terminal Torque	0.4Nm
Terminal Capacity	4 x 1.5mm <sup>2</sup> or 2 x 2.5mm <sup>2</sup>
Back Box Depth	Dependent On Plate Used
Operational Temperature	-5°C to +40°C
Warranty	10 Years
<b>Standards</b>	BS EN 60669-1:1999 +A1:2002 +A2:2008

## Additional Information

Ensure that the mains supply is isolated before commencing installation and refer to the circuit diagram with the relevant product.  
Bare earth cables must always be covered with appropriate sleeving and wired to the earth terminal.

UK Design Registration: 3015621